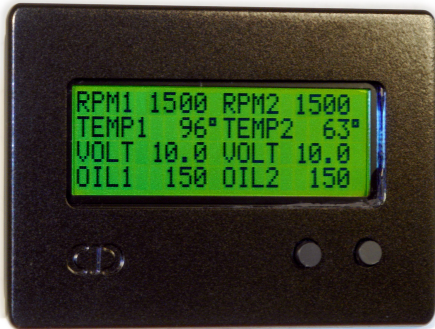


10 function digital gauge module for car/RV/boat

Tach, Temp, Volt, Fuel, Oil, RPM, MPH, Amps, and more



- User configurable instrument labels
- Huge 4.5" X 1.5" 20X4 character LCD display
- 7" X 5" X 1.25" sealed aluminum enclosure
- Works with existing senders
- Min/Max alarms for all inputs
- Cascade units for up to 16 functions
- Remote Control and display on PC/PDA included
- PC/PDA data logging included
- Field upgradeable
- Only 1.25" thick - easily fits into dash

Ideal as marine and boat gauge replacements or upgrades. They can also be used in automotive and RV applications as additional instrument clusters.

Units are capable of displaying multiple functions including digital tachometer, RPM, MPH, engine temperature, manifold temperature, exhaust temperature, oil pressure, water pressure, volts, amps, O2, MAP, fuel level, battery charge, **and more** - all in a single multi-function gauge cluster.

All sender/sensor inputs are programmable to match existing equipment. No need to replace senders. High/Low alarms are programmable for each sensor. Pick and choose your own sender combinations. Unique customizable calibration tables are available for all types of senders and can be downloaded to unit using serial or wireless interface. Simply modify a text file to suit your sensor application. Units can be configured for most standard automotive and marine senders.

Both a RS232 and Bluetooth wireless interface are available to attach to PC/Laptop/PDA for real-time viewing and data logging of gauge reading. View and log sensor inputs from outside your car/boat in real-time.

Units are stock with 3 temperature inputs, 2 voltage inputs, 2 pressure inputs, Fuel input, and 2 pulse inputs. Other configurations are available.

Units have 5 different graphic display modes -

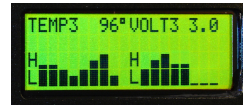
- **Data Display** - Values are displayed with Text labels and digital readouts. Up to eight can be chosen for each of 8 possible groups.
- **Histogram Display** - Sensor value is displayed with Text Label and digital readout along with a 8-bar Histogram that tracks values over user configured time interval from 15 seconds to several hours. Great for showing trends.
- **Bar Graph Display** - Sensor labels and values are displayed with a 12 segment Bar Graph from Min to Max. Up to four can be chosen for each of 8 possible groups. Great for comparing different sensors side-by-side.
- **Digital Gauge Display** - Sensor labels and values are displayed with a dial gauge with 5 segments from Min to Max. Up to two can be chosen for each of 8 possible groups. Great for comparing different sensors side-by-side.
- **Amplitude Ramp Display** - Sensor labels and values are displayed with a 8 segment ramp from Min to Max. Up to two can be chosen for each of 8 possible groups. Great for comparing different sensors side-by-side.



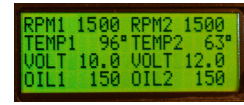
Digital Dial Mode



Bar Graph Mode



Histogram Mode



Digital Data Mode

Specifications

FEATURE	GAUGE-G8	GAUGE-X4	GAUGE-X2	GAUGE-RM
Display type	VFD	LCD	LCD or VFD	-
Display resolution	256X128	20X4 characters	24X2 characters	-
Display lines	(8 or 16) by 2	4 by 2	2 by 2	-
Gauge Pages	8	8	8	-
Gauge per Page	16	8	4	-
Gauge Modes	8	4	4	-
	Text, Small text, Large text, Dial, Large Dial, Bar graph, Histogram,	Text, Dial, Bar graph, Histogram	Text, Dial, Bar graph, Histogram	-
Bar Graph resolution	128	16	12	
Histogram resolution	128X64	10X16	12X8	
Display update rate	2 per sec	2 per sec	2 per sec	-
NMEA update rate	16 per sec	16 per sec	16 per sec	16 per sec
Analog Inputs	8	8	8	8
Pulse Inputs	2	2	2	2
NMEA Inputs	8	8	8	8
NMEA Outputs	16	16	16	16
Serial Ports	2	2	1	1
Input types	Temp 0-400°F, Temp 80°-2500°F, PS 0-150, Volt 0-30, Amp +/-100, Fuel Level 10-230 OHM, Pulse 0-12V	Temp 0-400°F, Temp 80°-2500°F, PS 0-150, Volt 0-30, Amp +/-100, Fuel Level 10-230 OHM, Pulse 0-12V	Temp 0-400°F, Temp 80°-2500°F, PS 0-150, Volt 0-30, Amp +/-100, Fuel Level 10-230 OHM, Pulse 0-12V	Temp 0-400°F, Temp 80°-2500°F, PS 0-150, Volt 0-30, Amp +/-100, Fuel Level 10-230 OHM, Pulse 0-12V
Alarms High/Low	8	8	8	8
Calibration Tables	8	8	8	8
Calibration resolution	256 X 6 character	256 X 6 character	256 X 6 character	256 X 6 character
Display Labels	16 X 8 character	16 X 8 character	16 X 8 character	16 X 8 character
Power	850 mA at 9V	300mA at 12V	250 mA at 12V	200 mA at 12V
Case Dimension	7.0" X 5.0" X 1.5"	7.0" X 5.0" X 1.5"	7.25" X 2.75" X 3"	6.5" X 2.25" X 3"
Module Dimension	5.75" X 2.6" X 1.6"	5.75" X 2.6" X 1.6"	-	-
SMRP Case	\$895	\$595	\$395	\$295
SMRP Module	\$595	\$395	-	-

* Prices effective 3/2006. Prices and specifications subject to change
* Copyright 2006 Chetco Digital Instruments, Inc. All rights reserved.